



UC100 SHEET METAL DOLLY | Aluminum

Construction

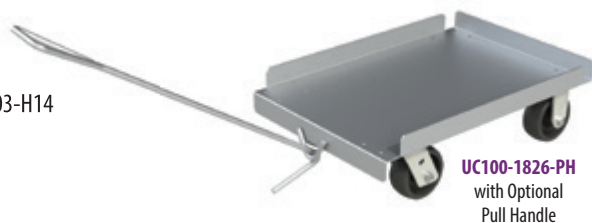
- Constructed of Heavy-Duty 3003-H14 aluminum alloy
- Sheet Metal Base
- Hook for Optional Pull Handle

Base

- Standard base is made from .125" thick aluminum
- 3 lips up, 1 lip down design
- Pull hook is constructed from ½" aluminum solid rod
- Heavy Duty (HD) Option:** features a base made from .187" thick aluminum

Casters

- 5" Poly-U plate casters
- Heavy Duty (HD) Option:** 5" x 2" Poly-U Casters



UC100-1826-PH
with Optional
Pull Handle

Model Number	Overall Dimensions			Ship Lbs.	List \$
	W	D	H		
UC100-1717	18"	18"	8"	16	317
UC100-1723	18"	24"	8"	18	338
UC100-2020	21"	21"	8"	18	345
UC100-2024	21"	25"	8"	19	360
UC100-2027	21"	28"	8"	19	375
UC100-1826-HD	19"	27"	9"	23	530
UC100-2733-HD	28"	34"	9"	23	568

Option	Description	List \$
PH	Pull Handle	30
3	3" Swivel Casters	Call for Pricing
HD	187" thick aluminum base and 5" x 2" Poly-U Casters	280



UC110 ANGULAR FRAME DOLLY | Aluminum

Construction

- Constructed of Heavy-Duty 3003-H14 aluminum alloy

Base

- Standard base is made from 1.5" x 1.5" x ⅜" Thick aluminum Angle
- Pull hook is constructed from ½" aluminum solid rod
- Heavy Duty (HD) Option:** features a 2" x 2" x ¼" Aluminum angle base

Casters

- 5" Poly-U plate casters
- Heavy Duty (HD) Option:** 5" x 2" Poly-O Plate Casters with ½" diameter axle and Delrin bearing, bolted on with all Stainless steel hardware

NEW!



UC110-2733

Model Number	Overall Dimensions			Ship Lbs.	List \$
	W	D	H		
UC110-1723	18"	24"	5"	19	503
UC110-2024	20"	24"	5"	19	525
UC110-2618	18"	26"	5"	19	518
UC110-2722	27"	22"	5"	19	555
UC100-2733	27"	33"	5"	20	578
UC110-2926	29"	26"	5"	20	584
UC110-2919	29"	19"	5"	19	563

Option	Description	List \$
520U	5" x 2" Heavy Duty Poly-Urethane Casters	159
620U	6" x 2" Heavy Duty Poly-Urethane Casters	175
COR	Tamper proof Correctional Hardware, 6" x 2" Performa-TPR Wheels Upgrade	195
HD	Heavy Duty Reinforcement, 5" x 2" Heavy Duty Poly-Olefin Casters	280



UC130 SHEET PAN DOLLY | Aluminum

Construction

- Constructed of Heavy-Duty 6063 aluminum alloy
- For 18" x 26" Trays, 15" x 20" Cafeteria Trays & 20" x 20" Glass Trays

Frame

- Frame is made from 1" square tubing
- Solid aluminum base
- Units feature 1" x ¼" flat bar bracing
- Optional upper tray rack with 1.5" x 1.5" x ⅛" angle
- Heavy Duty (HD) Option:** 1.25" heavy wall square tubing

Casters

- Units feature 5" Poly-U plate casters

Option	Description	List \$
2	Upper Tray Rack	59
HD	1.25" heavy wall square tubing	280
CORH	Tamper proof Correctional Hardware	65



UC130-1826



UC130-1826-2

Model Number	Overall Dimensions			Ship Lbs.	List \$
	W	D	H		
UC130-1826	22"	27"	32"	24	592
UC130-1826-2	22"	27"	32"	27	681
UC130-2020	24"	21"	32"	24	587
UC130-2030	19"	21"	32"	26	618